



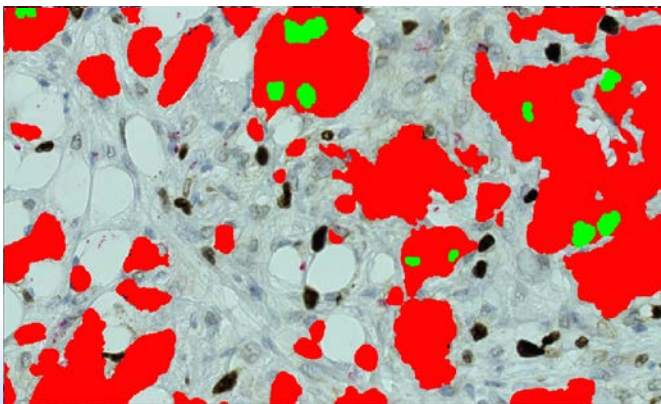
# Ki67/KL1 immunohistochemical double stains increase accuracy of Ki67 indices in breast cancer and simplify automated image analysis

PS Nielsen, NK Bentzer, V Jensen, T Steiniche, AMB Jylling  
Department of Pathology, Aarhus University Hospital & Vejle Hospital, Denmark

## BACKGROUND

Proliferation marker Ki67:

- Included in clinical guide lines
- Time consuming
- Low reproducibility



## AIMS

- Detect difference in accuracy & precision between Ki67 single & double stains
- Develop automated Ki67 quantification
- Explore relation between automated quantification & tumor characteristics in different regions





## **MATERIALS & METHODS**

- FFPE from 100 breast cancer pt.
- Ki67 & Ki67/KL1
- Two pathologists & image analysis (Visiopharm A/S)

## **CONCLUSIONS**

- Accuracy higher for double stains than single stains
- Precision of stains equal
- Manual & automated quantifications comparable
- Automated numbers correlated with tumor characteristics

