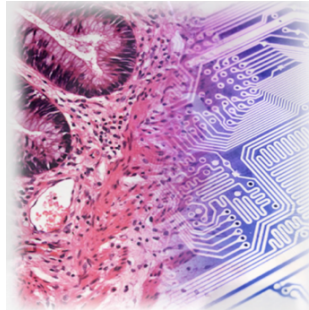


CALL FOR SUBMISSIONS:

"BREAKTHROUGH TECHNOLOGIES IN DIGITAL PATHOLOGY"

a special issue of
CMIG - COMPUTERIZED MEDICAL IMAGING AND GRAPHICS, ELSEVIER
in link with the
"EUROPEAN CONGRESS ON DIGITAL PATHOLOGY 2014", 18-21 JUNE 2014, PARIS



Following the long and successful tradition of the biennial Congress on Telepathology and Virtual Microscopy - lastly organised in Venice in 2012¹, we have the pleasure to announce the organisation of next (12th) **European Conference of Digital Pathology 2014**, from **18th to 21st of June 2014**, at **Collège des Bernardins**, close to «**île Saint-Louis**», in **PARIS**.

<http://www.digitalpathology2014.org>

These traditional congresses have been consistently involving visionary college of pathologists, dynamic scientific community, as dedicated industrial consortium - specialised in digital pathology.

Using this opportunity, we are supporting the emergence of a high-quality special issue, dedicated to a selection of articles concerning the coming breakthrough technologies in the modern era of the pathology, following its evolution towards (not exclusively):

- Digitisation, Label-free,
- Knowledge-driven (including semantics),
- Data-driven and telepathology,

in symbiosis with recent advances in high-content imaging.

This special issue will be entitled: **Breakthrough technologies in digital pathology** to appear in the autumn 2014 in **Elsevier Journal: CMIG - Computerized Medical Imaging and Graphics**²

Details about the preliminarily extended abstract submission (less than 1500 words) process could be found at:

http://www.digitalpathology2014.org/_uk/submission.asp

¹ <http://www.telepathology2012.com/congress/>

² <http://www.journals.elsevier.com/computerized-medical-imaging-and-graphics/>

The **Scientific Selection Committee of this Special Issue** is composed by:

Daniel RACOCEANU - Editor-in-chief (University Pierre and Marie Curie, Paris, France - Biomedical Imaging Laboratory, Paris, Image & Pervasive Access Lab, Singapore)
Philippe BELHOMME - Co-Chair (University of Caen, France)
Thomas BOUDIER (University Pierre and Marie Curie, Paris, France)
Lori BRIDAL (French National Center for Scientific Research, Biomedical Imaging Laboratory, Paris, France)
Christel DANIEL (Assistance Publique – Hôpitaux de Paris, France)
Vincenzo DELLA MEA (University of Udine, Italy)
Chao-Hui HUANG (Bioinformatics Institute, A*STAR, Singapore)
Klaus KAYSER (Charité Universitätsmedizin Berlin, Germany)
April KHADEMI (PathCore Inc, and the University of Guelph, Biomedical Engineering Department, Canada)
Jacques KLOSSA (TRIBVN, Chatillon, Paris, France)
Arvydas LAURINAVICIUS (Vilnius University, Lithuania)
Hwee Kuan LEE (Bioinformatics Institute, A*STAR, Singapore)
Richard LEVENSON (University of California, Davis, USA)
Olivier LEZORAY (University of Caen, France)
Shuo LI (GE Healthcare, University of Western Ontario and Lawson Health Research Institute, Canada)
Nicolas LOMENIE (University Paris Descartes, Paris, France)
Shijian LU (Institute for Infocomm Research, A*STAR, Singapore)
Henning MULLER (University of Applied Sciences Western Switzerland, Sierre, Medical Informatics, University Hospitals and University of Geneva, Switzerland)
Anant MADABHUSHI (Case Western Reserve University, USA)
Benoît PLANCOULAIN (University of Caen, France)
Vytenis PUNYS (Kaunas University of Technology, Lithuania)
Nasir RAJPOOT (University of Warwick, UK)
Marcial Garcia ROJO (Hospital General Universitario de Ciudad Real, Spain)
Ludovic ROUX (University Joseph Fourier, Grenoble, France)
Thomas SCHRADER (University of Applied Sciences Brandenburg, Germany)
Katarzyna ZARYCHTA (HistoIndex, Singapore, Beijing, London)

You and your team are warmly invited to submit a contribution to this promising, selective and impactful special issue, which we would all like to become a real milestone, guideline of future of pathology.

The deadline for the submissions will be on the **20th of January 2014** for an **extended abstract** - 1500 words – to be submitted at:

<https://theoffice.fervetopus.net/en/theoffice/digital-pathology-2014-abstract-upload/>

and the **28th of March 2014** for the **full paper at CMIG** (information will follow after the acceptance of the extended abstract)

Editors:

Daniel Racoceanu (Univ. Pierre and Marie Curie, Sorbonne Universities, Paris), Philippe Belhomme (University of Caen),

Contacts: daniel.racoceanu@upmc.fr, philippe.belhomme@unicaen.fr.